

22/23

Impact Report



All that is possible—  
together.

We are proud members of:



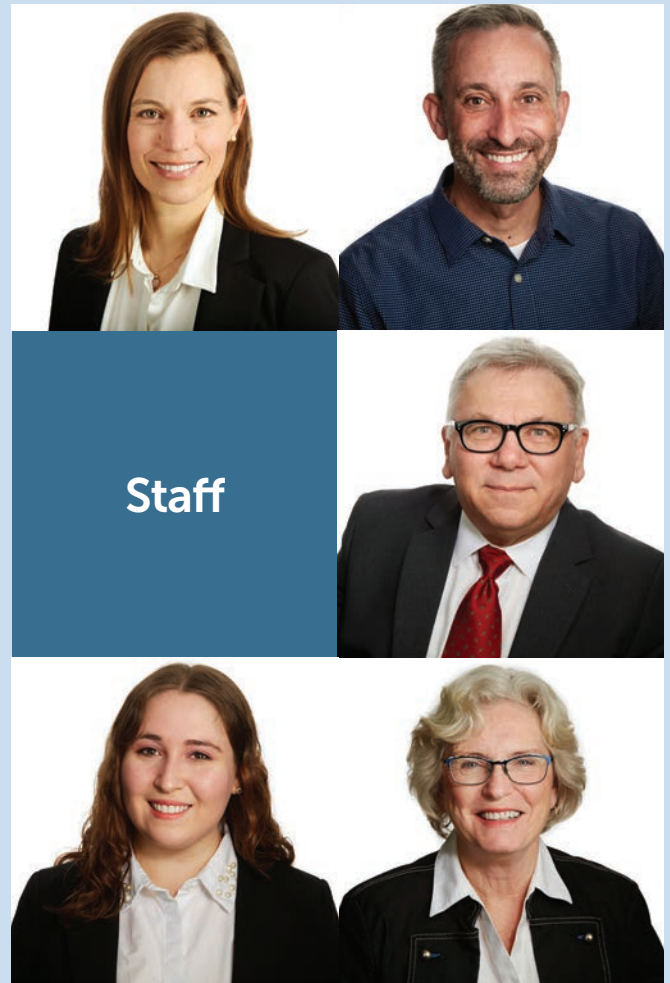
COMMUNITY  
FOUNDATIONS  
OF CANADA

# Land Acknowledgement

Land acknowledgements can be an act of reconciliation toward the rebuilding of relationships with Indigenous peoples and lands. By voicing our respect and responsibility, we seek to strengthen our relationship to the land that sustains us, with Indigenous peoples who hold the land sacred and to one another.

The Guelph Community Foundation acknowledges that our place of work resides on the treaty lands and the traditional territories of the Anishinaabe, Attiwonderonk, Haudenosaunee, Petun and Wendat peoples. It is home to many past, present, and future First Nations, Inuit, and Métis peoples. Our acknowledgement of the land is our declaration of our collective responsibility to this place and its peoples' histories, rights, and presence.

Cover photo: Courtesy of Rainbow Day Camp, GCF Kids to Camp Fund recipients



Staff as of the 2023 AGM clockwise from top left:

Beth Ann Valente CPA CA, Operations and Finance Executive

Chris Willard, Development Executive

Cesare Pandolfi, Finance Manager

Bev Watters, Volunteer Coordinator

Christina Mongeon, Grants and Office Administrator

The Guelph Community Foundation (GCF) is a public foundation and a registered charity. You can access audited financial statements at [guelphcf.ca](http://guelphcf.ca) and view our profile on the Canada Revenue Agency website under charities and giving at [canada.ca](http://canada.ca).

Charitable Registration Number: 867278350 RR0001

We are a Living Wage Employer.



# From our leadership team

We are pleased to introduce ourselves as the leadership team of GCF. A cooperative leadership model reflects the many values within the Community Foundations of Canada ethos. We are not the first to employ this model but see it to be an effective way to adapt to an increasingly complex charitable landscape.

With complexity comes many new challenges and opportunities and we are both guided by the values of the foundation and live them every day. These values ensure that leadership within our organization and GCF's leadership in the community is:

- **Community Driven**  
We are of and for our community.
- **Respectful**  
We act in ways which value all people.
- **Bound by Integrity**  
We earn and maintain trust by operating as philanthropic leaders.
- **Impact Focused**  
We address priority needs within our community through meaningful connections and intentional resource allocations.



We employ these values in our decision making on everything from amendments to our charitable purposes to accommodate granting to non-qualified donees, to collaborating with community partners in an evidence based campaign to reduce homelessness in Guelph.

In 2022 we made significant contributions into the community and undertook new projects:

- **Approved a one-year increase** of 2% to our endowed granting disbursement, to 5.5%, to invest much needed funds into our community still weighed down with pandemic burdens.
- **Exercised strong fiduciary governance** allocating excess from the outstanding 2021 returns to the Stabilization reserve funds.
- **Launched Home for Good Campaign** in partnership with United Way Guelph Wellington.
- **Undertook strategic planning process.**

In 2023 we continue to pursue strong community impact while we adapt to changes in the not-for-profit landscape:

- **Adapting** to legislative amendments to enable greater granting impact.
- **Embedding** principles of trust-based philanthropy into our granting models.
- **Releasing** a Vital Signs Report on our community well-being in partnership with Toward Common Ground.

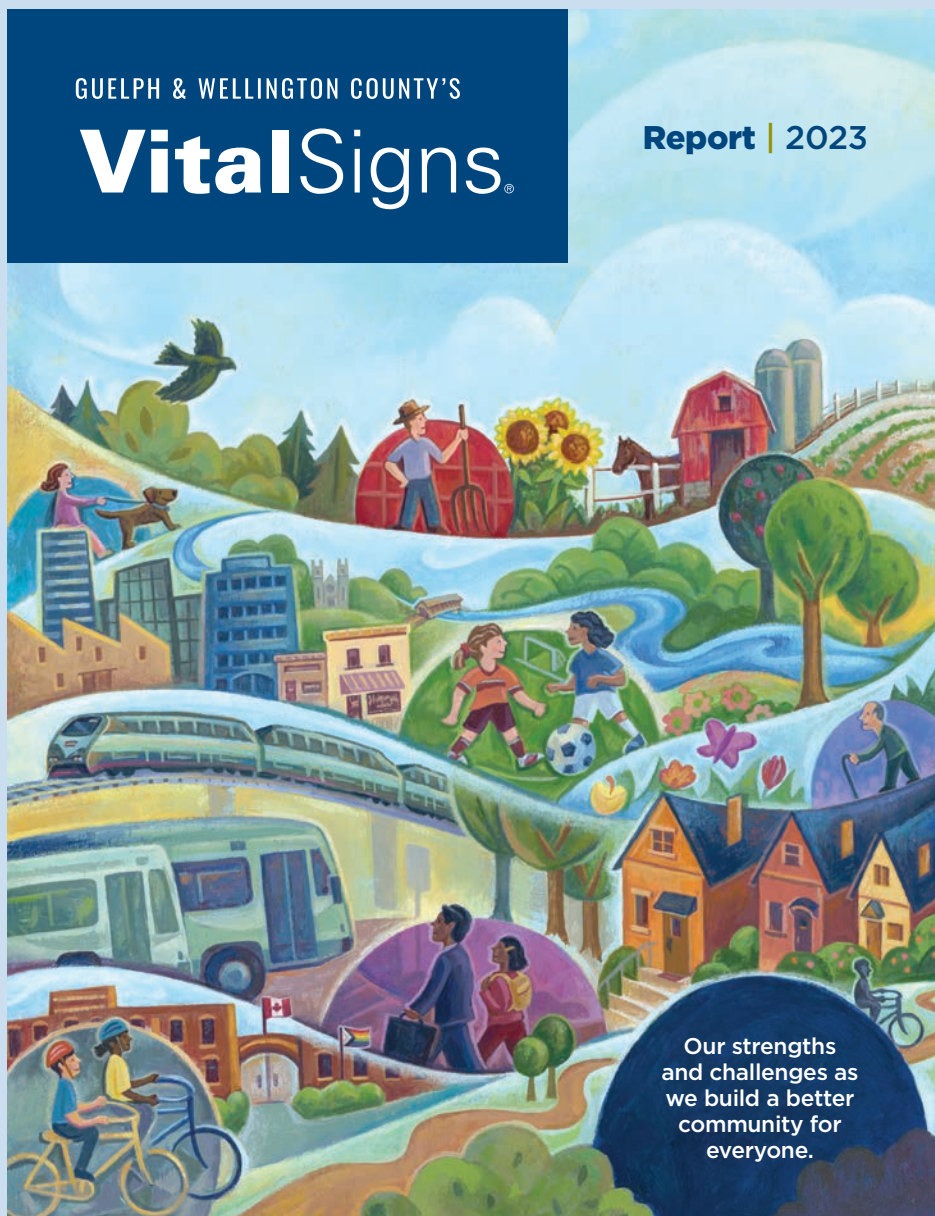
We look forward to working together, both as a team and as a community partner, toward GCF's vision 'to inspire philanthropy as the trusted connection between people and causes within our community' and thank everyone for their trust and support.

*Chris Willard, Development Executive and Beth Ann Valente, Operations and Finance Executive*

**The Guelph Community Foundation's vision is to inspire philanthropy as the trusted connection between people and causes within our community.**

# Introducing our 2023 Vital Signs Report

Vital Signs<sup>®</sup> is a community check-up that delivers a snapshot of well-being in Guelph and Wellington County, from walk scores and waste diverted from landfills to the 172 classrooms of children who live in low-income households.



In partnership with Toward Common Ground, a local collaborative of multiple social and health service organizations, The Guelph Community Foundation created this report to provide critical, local evidence for philanthropic decision-making, from our community's level of resiliency and sense of belonging to housing challenges and environmental impact.

We proudly provide this information in support of our mission to empower people and causes through evidence-based granting and donor support.

We invite you, our community, to use this report to spark civic engagement, focus public debate, guide actions, and consider the question: **What will we do to make our community a better place for everyone?**

Special thanks to our partner Toward Common Ground and our sponsor United Way Guelph Wellington Dufferin.



Toward Common Ground

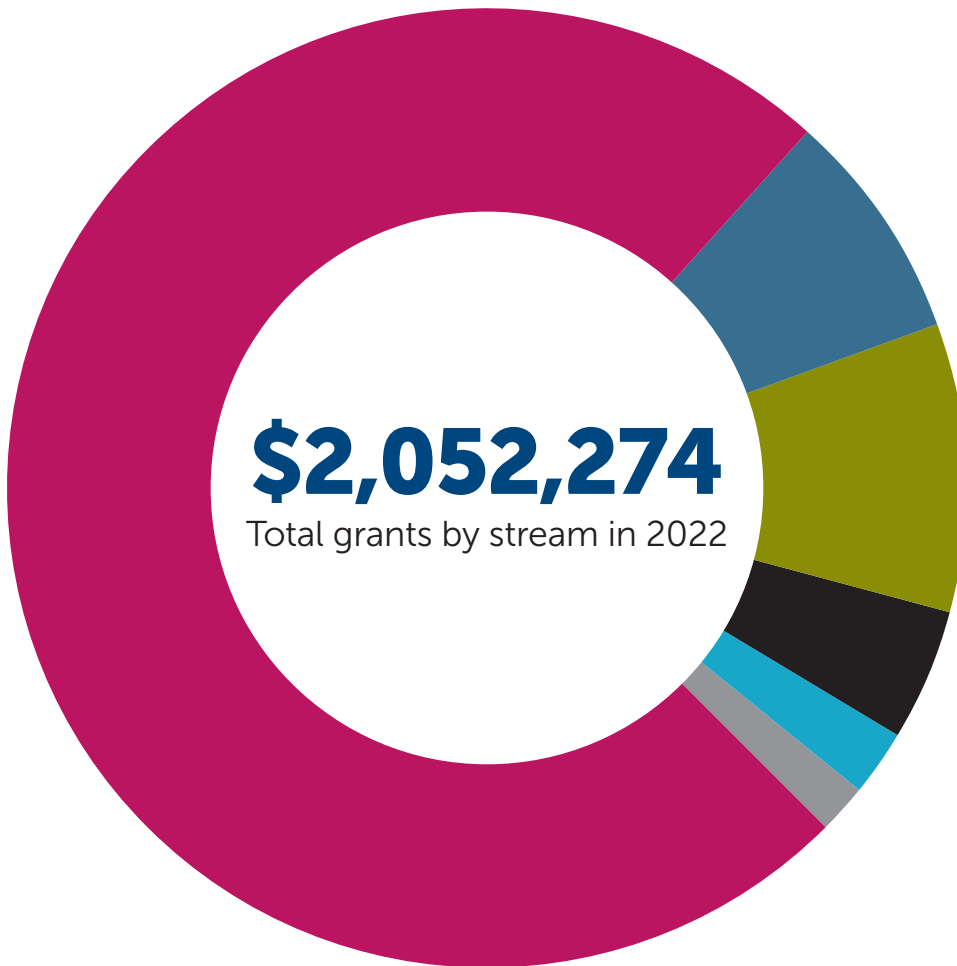


**United Way**  
Guelph Wellington  
Dufferin

To read the report, please visit [guelphcf.ca/vital-signs](https://guelphcf.ca/vital-signs).

# Grants for impact

In 2022, The Guelph Community Foundation invested \$2 million in 271 grants to 188 charities.



**\$1,520,648**

Directed Flowthrough Grants

74.1%

**\$160,472**

Community Grants

7.8%

**\$199,854**

Designated & Donor Advised Grants

9.7%

**\$92,500**

Musagetes Grants

4.5%

**\$46,400**

Kids to Caamp Grants

2.3%

**\$32,400**

Scholarships and Bursaries

1.6%

## Top three Vital Signs funded

**#1**

**\$830,107**

Economic and Household Resources

**#2**

**\$605,560**

Health

**#3**

**\$293,085**

Belonging and Participation



# Your impact on the community

Above photo courtesy of Kids to Camp recipients Belwood Lodge and Camp.

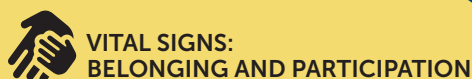
## Kids to Camp

GCF's grant program, Kids to Camp, provides funds to registered charities (or organizations partnered with a registered charity) operating camps that allows them to offer free or subsidized camp registration to children and youth from financially disadvantaged families. If it were not for these funds, many of the local campers who benefit would not otherwise have an opportunity to participate in the summer camp experience; something that can be so beneficial to children's development. We believe that cost should not be a barrier for families who could benefit from the many experiences that camp can provide.



**\$2,500**  
grant

### Rainbow Day Camp



One of the Kids to Camp recipients, The Rainbow Day Camp, had a returning family who had one of their children suddenly pass away weeks before camp began. A subsidy spot was given to their other child who would not have attended otherwise. This child then not only participated in the camp, despite their grief, but their parents asked for additional weeks at the camp because, "Rainbow became the only place that they felt safe other than home." The camper expressed how much she loved camp, and her parents reported that they saw her able to smile again.

Above: Rainbow Day Camp campers pose in front of a City of Guelph firetruck. Photo courtesy of Rainbow Day Camp.

# Community Grants



## Seed, Soil and Spirit School: Herbal Immersion Program



VITAL SIGN: EDUCATION

Seed, Soil, and Spirit School is a plant medicine school for Black, Indigenous, racialized, and allied people who love plants and healing justice. The school began operations in 2020 with little to no resources. For two years, it offered programming, hosted cross-cultural community spaces, and nurtured community connections. It hosted over 230 students, raising over \$27,000 to ensure all applicants could join regardless of income and did it all through small donations and sliding scale registration fees.

Through GCF's Community Grants, staff received funding to hire a coordinator which has allowed the school to build a solid foundation for its future, rooted in accessibility. The coordinator was able to help ensure the program is more accessible for a variety of learners, including those with different learning styles and those who speak English as a second language. They created a glossary of cultural, medical, and botanical terms, a workbook, and supported administrative work to help implement a new advisory council. Additionally, staff began consulting with local community members and organizations run primarily by and for Black, Indigenous, and racialized people to design their outdoor classroom and identify future collaborations.

**\$5,000**  
grant



**\$5,000**  
grant

## Church of the Apostles' Helper Bees and J.O.E.s Partnership



VITAL SIGN: ECONOMIC AND HOUSEHOLD RESOURCES

The Helper Bees from the Church of the Apostles collaborated with participants of the Jobs. Opportunities. Enterprise. (J.O.E.) Program to produce meals for an ongoing emergency food program. The J.O.E. Program focuses on innovative, community-based employment and job training for adults with developmental disabilities. With funding from GCF's Community Grants, the Helper Bees and the J.O.E. Program worked together for a year. They prepared over 6,000 sandwiches with ingredients sourced by Community FEWD from the Seed and from the Guelph Food Bank. Approximately 1000 kilograms of food waste was diverted into making the sandwiches!

The food was distributed through downtown Guelph by J.O.E. participants and by Your Downtown Guelph Friends. Participants also helped distribute donated clothing, hygiene products, and grocery bags of food. "Thank you for the opportunity to work at the Church of the Apostles. The kitchen workspace was very helpful, and we got so many sandwiches done that went to wonderful folks who needed them," said Nathan, a member of the J.O.E. Program.

Above: A J.O.E. participant (middle) prepares sandwiches along with some Helper Bees from Church of the Apostles. (Courtesy of Church of the Apostles' Helper Bees)



**\$2,500**  
grant

## The Grove Hubs: The Grove Guelph Outreach Program



**VITAL SIGN: ECONOMIC AND  
HOUSEHOLD RESOURCES / HEALTH**

The Grove Hubs provide youth with mental health and wellness programs and services in a safe space. The Guelph

and Wellington Grove Outreach Program, which received funding from GCF, connected the Grove Youth Ambassador team with youth across Guelph. The team delivered in-school presentations, tours of The Grove, thousands of summer program postcards for students, swag bags and educational videos. As a result, The Grove has seen an incredible 180% increase in the number of youths seen monthly!

The program has also allowed for the growth and enhancement of partnerships with organizations such as Anishnabeg Outreach, Chabad of Guelph, and the Guelph Sikh Society. The Grove Hubs Guelph has received funding from Mental Health Research Canada to work with the Homewood Research Institute to better understand who they are seeing in the Hubs and who they aren't so they can better target their outreach efforts. They plan to continue meeting youth where they're at, and to refine their communications and social media strategy to connect with them going forward.

Below: The Grove Hubs Guelph, located at the University of Guelph. (Courtesy of The Grove Hubs Guelph)

## Royal City Mission: Community Drop-In Meal Program



**VITAL SIGN: ECONOMIC AND HOUSEHOLD  
RESOURCES / HEALTH**

Royal City Mission (RCM) is a food security and relief agency in Guelph that ensures that everyone, regardless of socio-economic status, has access to the nutrition they need to survive by serving lunch 5 days per week and dinner 6 days per week at no cost. In addition, breakfasts prepared by Hope House are delivered bi-weekly to RCM for staff and volunteers to reheat and serve.

COVID-19 has had a profound effect on RCM as it has increased their service volume by 175% in response to the closure of other drop-in city services. Prior to the pandemic, they served over 600 meals weekly. With partial funding from GCF's Community Grants, staff are now able to serve 1700+ meals a week, which makes up approximately 80% of the community meal services in Guelph!

One community member had been homeless for a few years, but with RCM's support and encouragement, as well as help from other agencies, they were housed and began looking for employment. Their journey started with accessing meals, then developing relationships, and then connecting to housing supports. Along the way, they volunteered at several services and are now advocating for others who experience the struggles they faced.

Above: Coffee being served at the Royal City Mission's Drop-In Meal Program. (Courtesy of Royal City Mission)

**\$5,000**  
grant





## Elora Road Christian Fellowship: The Rebuild Project



VITAL SIGN: SAFETY

Elora House is a three-stage recovery centre offering programs and services focused on rest, therapy, education, and job training post-sex trafficking. These services can help survivors regain control over their lives and build a sense of empowerment. Additionally, by advocating for survivors, Elora House helps raise awareness about human trafficking and works towards preventing it from happening in the first place.

With the support it has received through GCF's Community Grants, Elora House has expanded its Stage Two programming to a larger facility, increased its existing resources, hired a new staff member, and formed two new community partnerships. It was able to support double the number of survivors due to this expansion. In the past year, it's seen three residents complete their programs and take positive steps toward their recovery, such as finishing high school and enrolling in post-secondary education.

**\$10,806**  
grant



*Elora House*

## Scholarships and bursaries

**In the spring of 2023, the Foundation awarded 16 outstanding Guelph and Wellington County graduating students \$20,150 in scholarships and bursaries.**

These 16 scholarships and bursaries have been set up by generous fundholders to support local students pursuing business, STEM related subjects, trades, athletics, or are there to help support those pursuing post-secondary education but are facing financial barriers. The students' application stories are exceptionally inspirational, as there are numerous challenges and obstacles these students have overcome in addition to the financial burden of post-secondary, such as health issues, abuse, racism, mental health challenges and more. The recipients, from both the Public and Catholic School Board, have demonstrated determination, perseverance, compassion, respect for others and their community, and have shown tremendous potential.

Financial barriers for students are high and ever on the rise, especially as inflation has so dramatically increased the price of living. These sixteen scholarships, which will be helpful to the students, often only scratch the surface of their upcoming financial need as they enter post-secondary education. Many of these students have been working full-time jobs while in school and will be supporting themselves financially. The creation of these awards is often in memory of someone important to the fundholder's family and is a thoughtful way to keep their generous spirit and memory alive. If you are interested in learning more about how you or your family can create a scholarship or are looking at ways to support students in our community, we would love to provide support and help you set up a fund.

Clockwise from upper left:

Community Grant Recipients Big Brothers Big Sisters Guelph In-School Mentoring volunteer and participant.

Photo courtesy of BBBSG

Kids to Camp recipient Camp Quality camp councilors.

Photo courtesy of Camp Quality Southern Ontario

Community Grant recipient West Village Community Development Co-op's Community Garden participating family.

Photo courtesy of WVCDC.



# What is the Community Fund?

The Guelph Community Foundation helps you make your charitable giving easy, flexible and, most importantly, effective. We have in-depth knowledge of the community, its organizations, needs and opportunities. Our many charitable funds have been established by people from all walks of life who have one thing in common – the desire to make a difference in their community. Donations to the GCF Community Funds are pooled together and invested. The income from these investments is then granted to support local registered charities, while the capital remains untouched. This

means your original gift will have impact in the community today, tomorrow, and forever.

When you donate to the Community Fund at the Guelph Community Foundation it means that we are able to respond to a wide range of grant requests from charities across Guelph and Wellington County. These funds are 'unrestricted' which means we can use them to help support where the greatest needs are. Our volunteer Grants Committee is comprised of a diverse group of local residents who review applications from local registered charities and recommend how

funds are to be distributed. These applications are then approved by our Board of Directors and the funds are given out, having great impact in the community. There are several ways to give and to have measurable impact where it is needed. We have a number of donation options you can choose from. All donors will receive a tax receipt for their gift.

Visit  
**guelphcf.ca** to  
donate today!

# Musagetes Fund

Since 2004, this donor advised granting stream has been providing grants to registered charities (or organizations partnered with a registered charity) that provide contemporary art and culture programming with an emphasis on new approaches to building community and culture. This fund is intended to “act as a catalyst for the ongoing production and enjoyment of performing, visual, and literary arts excellence in Guelph and area.”

## Guelph Museum’s McCrae in the Mirror: Contemporizing the Lt. Col. John McCrae Narrative



Partially funded through the Musagetes Fund, *McCrae in the Mirror* is a one-act play that introduces new perspectives on the legacy of Lt. Col. John McCrae. Led by the Guelph Museum, the play’s themes included colonization, memorialization, and ‘our current-day quest for equity and peace.’ Six local theatre professionals were provided work opportunities because of this project. The play was performed at the *McCrae House Backyard Theatre* in Guelph and at the *In Flanders Fields Museum* in Ypres, Belgium, in August 2022. Nearly 300 people attended the shows, and the reviews were exceptional: “thought-provoking,” “every Canadian should see this show,” “the best Backyard Theatre presentation I’ve seen, and I’ve seen them all.”

The most significant takeaway from the run of the play was the readiness of audiences to embrace new perspectives. Staff were concerned the play was risky because it interrogated the legacy of Lt. Col John McCrae, and First World War memorialization, as traditional narratives were interpreted through a lens of decolonization. With credit to the playwright, Mike Ford, who was able to honour past understandings while inspiring new thinking through a well-crafted script and engaging performances, audiences were enlightened and moved by *McCrae in the Mirror*.

Mike Ford wrote *McCrae in the Mirror*, a *McCrae House Backyard Theatre* production. (Courtesy of Guelph Museums)



**\$5,000**  
grant

## Guelph Black Heritage Society: #ChangeStartsNow Digital Archive Project



The #ChangeStartsNow initiative provides educational programming on Black history and culture as well as relevant resources on diversity and discrimination. The initiative’s new Digital Archive project has been digitizing materials such as photos, audio recordings, documents, and records from members of the local Black community with the goal of preserving important historical and cultural artifacts, raising awareness, and increasing knowledge about the history and contributions of Black settlers, Black immigrants and the Black community in Guelph and Wellington County.

In 2022, with funding from the Musagetes Fund, a sound engineer made digital copies of the recordings of the Nicky Dread Radio Show, hosted by the late Nick Taylor on CFRU radio for over 40 years. Nick brought the sounds of reggae music and the Caribbean to the community of Guelph and Wellington. Caribbean immigrants began entering the community in the 1950’s and their migration is a major part of our community’s Black history. Nick’s family was pleased that the GBHS could take on this project because by creating digital copies of his radio shows, a new generation will learn of his impact on our community and the music that he loved.

Nick Taylor in the CFRU station with his son Malcolm and grandson Charlie. (Courtesy of GBHS)



**\$5,000**  
grant

# Our funds and fundholders

## Charitable Endowment (open for contribution)

Action Read Community Literacy Centre of Guelph Fund  
Bruce Trail Conservancy Fund  
Children's Foundation of Guelph & Wellington Fund  
**NEW** Compass Community Services Resilient Fund Elliott Endowment Fund  
Grand River Conservation Fund  
Guelph Arts Council Jane Graham Memorial Fund  
Guelph Arts Council Legacy Fund  
Guelph Arts Council Youth Endowment Fund  
Guelph Community Health Centre Endowment Fund  
Guelph Museums Fund  
Guelph Public Library Fund  
Guelph Wellington Women in Crisis Fund  
Hammill Family Tribute Fund Supporting the Guelph Y SHARKs  
Hillside Festival Endowment Fund  
HIV/AIDS Resources and Community Health (ARCH)  
Hopewell Children's Homes Fund  
Hospice Wellington Fund  
June McCann Fund  
KidsAbility Fund  
River Run Centre Endowment Fund for the Performing Arts  
Shelldale Family Gateway Endowment Fund  
The Grove Hubs Endowed Fund  
The Suzuki String School of Guelph Fund  
Unitarian Congregation of Guelph Future Fund  
United Way Guelph Wellington Dufferin Tomorrow Fund

## Endowed

175th Anniversary Scholarship Fund  
Ages Foundation Fund  
Andy Lindsay Memorial Scholarship Fund  
Angelo and Rina Longo Fund  
Anna and Vivian Fund for Healthy Kids and Families- O'Brien Trochta  
Anne and John Lawrence Memorial Fund  
Anne Hohenadel Fund  
BDO Community Support Fund  
Bonnie Ewen Fund  
Bruce Graham Memorial Fund  
Camp Discover Fund  
Clare & Shirley Rennie Family Fund for Literacy  
Class of '71 Award in Memory of Kathryn Winegard  
**NEW** Community of Hearts Scholarship Fund  
Cremasco Fund  
Daniel & Marcella Furlong Family Foundation  
Dianne Dance & Family Fund  
Dr. Charles Pinch Fund  
Dr. Glenn D. Peirson Fund for the Arts  
Dr. Griffith A.V. Morgan Fund  
Dr. Harry Downie Memorial Fund  
Eric Goegan Scholarship Fund  
Frances Mackenzie Martin Estate Fund  
FS Build Fund  
GCF Children & Youth Fund  
GCF Community Fund  
GCF Environmental Legacy Fund  
GCF Sustainable Operating Fund  
Girls in Sports Fund  
Gladstone and Evelyn Mowatt Memorial Fund  
Gordon Macleod Memorial Scholarship Fund

Guelph Chamber of Commerce Millennium Scholarship Fund  
Harrison Legacy Fund  
Hood Family Fund  
Hugh and Lorna Guthrie Fund  
Iolanda Maugeri Hall Business Scholarship Fund  
Jack and Nancy Sinclair Fund  
Jamie Vickery Memorial Fund  
John A. Hourigan Memorial Fund  
Kachina Fund  
Kaiser Family Fund  
Kathie Deters Young Performers Fund  
Ken and Eileen Hammill Fund  
Ken Danby Legacy Fund  
Kiera Schneider Memorial Fund  
Kimberly Thompson Memorial Fund  
Koonstra Family Foundation Fund  
Lassen Johnson Family Fund  
Lcol Rod Keller Memorial Scholarship Fund  
Mabel Anne Brouwer Scholarship Fund  
**NEW** Mabel Anne Brouwer Scholarship  
Mactaggart Hryn Family Endowment Fund  
Make your Mark Foundation in Memory of Kayla Chadwick  
Mary Phelan Fund  
Masquerade Fund  
McKeough Taylor Fund  
Meridian Credit Union Fund  
Mildred Christie Fund  
Miller Thomson Community Fund  
Moffat-Forsyth Family Fund  
Musagetes Fund  
Norman Earl Webb Community Fund  
Norman Earl Webb Donor Advised Fund  
Norval and Mary K. Richards Fund  
OMS Graduate Scholarship in Industrial Organizational Psychology Fund

Paul J. Smith Memorial Fund  
 Peter and Sabine Davison Fund  
 Peter Szkotnicki Legacy Fund  
 Ray and Maureen Scapinello Family Fund  
 RLB LLP Community Fund  
 Rothwell Family Fund  
 Rudolph (Duke) and Elizabeth (Betty)  
 Sorbara Family Welcoming Fund  
 Seven Generations Forward Fund  
 Shelldale Family Gateway Bursary Fund  
 SmithValeriotte Education Bursary  
 Squires Family Recreation and Sports Fund  
 Tai Yu Fund  
 The Co-operators Fund  
 The Griffith and Violet Morgan Fund  
 The Mactaggart Team Fund  
 The Tatham Fund  
 Thelma Townsend Fund  
 Tom and Nathan Incedon Memorial  
 Award Fund  
 Tom Bird and Jay Elinesky Fund  
 Valcom Employee Guelph Health Centres  
 Benefit Fund  
 Willard Jaklitsch Family Fund  
 William and Catharine Lord Endowment  
 Fund  
 William D. Packham Fund  
 William Darragh Gastle Endowment Fund  
 William K. Greenaway & Anne C. Bawden  
 Fund  
 Wismer Fund for the Arts  
 Wynne Townsend Christie Fund

## Funds for Charitable Distribution

Corinne Beingessner Fund  
 Mactaggart Hryn Family Fund  
 Wood Roberts Family Fund

## Funds Held for Others

Friends of the Guelph Public Library Fund  
 Guelph Community Health Centre  
 Managed Fund  
 Upper Grand Learning Foundation Fund

## Non-Endowed

10C Change Fund  
 10C Harvest Impact Fund  
 AlectraCARES Community Support Fund  
**NEW** Augeo Fund  
 Bill Mactaggart Scholarship for OVC  
 Bishop's Education Fund (Wellington  
 Catholic District School Board)  
 Boarding House Arts Fund  
 Butt Family Memorial Soil Health Fund  
**NEW** Charity Enterprise Fund  
**NEW** Community Services Recovery Fund  
 Cremasco Fund  
 Cutten Club Fund  
 Cynthia Macleod Fund  
 Douglas Brown Memorial Fund  
 Eric Goegan Scholarship Fund  
 Fathers Remembered by Daughters Fund  
 First Nations, Metis, Mixed Ancestry and  
 Inuit Circle Fund  
 Graham and Judy Knowles Charitable  
 Fund  
 Grand River Conservation Foundation Fund  
 Guelph Community Response Fund  
 Guelph Giving Pledge Fund  
 Indigenous Community Development Fund

Italian Canadian Club Fund  
 June McCann Fund  
 Kimberley Walker Fund  
 Lassen Johnson Family Flow-through Fund  
 Mactaggart Hryn Family Flow-through  
 Fund  
**NEW** Mary Nyegony Deng Legacy Fund  
**NEW** McBey Family Flow Through Fund  
 Nicholas Lambden Memorial Children's  
 Foundation Fund  
**NEW** Pay It Forward Arts Fund  
 Ray Scapinello Foundation Fund  
**NEW** Sleeman Water Foundation Fund  
**NEW** Steve & Debbie Bowier Temp FT  
 Fund  
 The Grove Hubs Flow-through Fund  
 The Guelph Games Sport and Community  
 Fund  
**NEW** The Home for Good Campaign Fund  
 The Nightingale Fund Flow-through Fund  
 ToastyToes Guelph Fund  
 Transformative Arts Guelph Fund  
 Will Medeiros Fund

## **NEW** Bequest and Estate

**NEW** Pauline and Bob Curtis Fund  
**NEW** Goddard-Freudenthaler Fund

# New funds spotlight

## Pay it Forward Fund

Created in March of 2022, the **Pay it Forward Fund** is a Donor Directed Flow Through fund created by Barbara Salsberg-Mathews and husband Bruce Mathews. The fund was set up as a new arts award program for Guelph.



The fund totals \$5,000 per year for the next four years and will fund one arts-based project every year. This award is given to help selected local artists fund projects that benefit the community. It is designed to encourage artists from any discipline to use their talents to 'pay it forward.' The award could take many forms by using the arts to heal, give a hand-up, help build self-esteem, beautify our environment, or enrich and improve others' lives. Artists are encouraged to look at the

needs of their community and propose projects that would fill those demands using the arts as a mode of inspiration.

"Today we're seeing seeds of hate grow and fester: the antidote to hate is kindness, coupled with action to pay it forward," Salsberg-Mathews says. She has used her own visual art to pay it forward through a variety of fundraising projects over the years and as a volunteer on different community organizations.

The Pay it Forward Fund's logo depicts sugar maples, which are native to the Guelph region. "Maple keys take flight, propagating wherever the wind takes them. Like the maple keys, this fund is a way to grow art throughout the community, and at the same time enrich the lives of those who will encounter these artworks in their day-to-day lives," Salsberg-Mathews says.

The inaugural recipients of the Pay It Forward Arts Fund in 2022 were Maeve Hind and Alexa Collette. Hind and Collette guided at-risk youth in creating a 7'x15' mural in the Wyndham House Youth Hub that is 'for youth, by youth.' The artists shared that they felt the availability of these kinds of grants and awards has made them feel seen, "because it's important to support smaller scale projects that still make a meaningful impact within the community."

**Inset photo:** Artists Maeve Hund and Alexa Collette, courtesy of the artists.

# Creating your own Fund

We'd like to make it easy for you to invest philanthropically in whatever way works best for you.

**There are two types of funds you can create, endowed and non-endowed.**

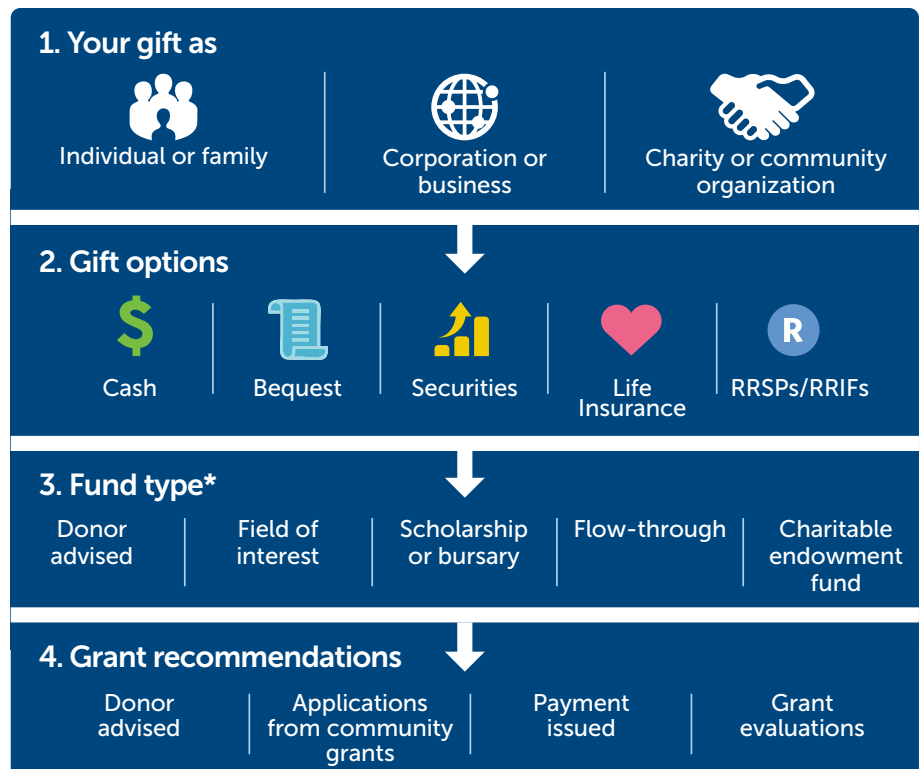
Endowed funds allow for the growth of your original investment over time and gift it every year, forever, to charities doing fantastic work. Non-endowed funds are more immediate — your investment is granted in its entirety over the course of a year.

## 5 steps to establish your fund:

1. **Define** your philanthropic goals and financial objectives.
2. **Select** the type of fund that matches your goal and objectives.
3. **Name** your fund. See a full listing of our current funds on our website.
4. **Sign** a fund agreement and process your gift to GCF.
5. **Promote** your fund to build support for your cause.

**If you are interested in creating a fund, we are here to help guide you through the process. For more information, please visit [guelphcf.ca/creating-a-fund](http://guelphcf.ca/creating-a-fund).**

## How to give



\*See page 10 to learn more about our funds.

# Providing a gift in your will

We are here to help you achieve your philanthropic goals

You might already be actively giving, and want it to be thoughtfully organized. Perhaps you have thought about how your philanthropy could be more strategic, but need help. Maybe you have thought about setting up your own charitable foundation to involve your family. Or maybe you want to leave part of your estate to charity, but don't know where to turn.

Including a charitable bequest in your Will is a simple way to make a lasting gift to your community. When you make this gift through The Guelph Community Foundation, we establish a Fund that becomes your personal legacy of giving.

#### What next?

You or your lawyer can contact Chris Willard at [cwillard@guelphcf.ca](mailto:cwillard@guelphcf.ca) or 519-821-9216.



#### INTERVIEW

Catherine and Paul,  
recent fundholders  
with a Bequest and  
Estate fund

#### **Why create a fund at the Guelph Community Foundation?**

We were talking about this long list of charities that we'd be jiggling around for a few years. And our lawyer said, well you know, you could set up a fund or join in with a fund... then you can still give how and to where you want to, but it'll save you in legal fees and all that hassle. We hadn't really thought about that before then, and we didn't think that we had enough money for anything so fancy, but we had heard about the Guelph Community Foundation.

#### **Why give back to our community?**

We have been community people in our work and in everything we've done for decades and so it seemed like the natural thing to do. I mean, if you have the money, you can give it all to one person, or two, or three, or you can give it to a whole city of people and create more change in people's lives. It comes very naturally to us—if we have extra or more than we need then we'll definitely be giving to those who don't have in any number of ways.

#### **What do you hope to accomplish?**

To help future generations. GCF reaches out in all directions of the community of Guelph, and we've come to value that connection.

Photo: Courtesy of Catherine and Paul.

**"By creating a family foundation (or giving to an existing fund) people remember you were here, long after you are gone. It creates an echo of the life you lived."**—Frank Valeriote, *Council, SV Law*

**"Many of my clients want to give to a charity that means something close to their heart. They want to give back as a way of saying thank you."**—Niheer Ravaliya, *Investment Specialist, Scotiabank*



# Our donors

## Many thanks to our donors

Aherns, Steve	Curtis, Pauline and Bob	Kennedy, Dan	Pollard, Ryan	Estate of Paul MacPherson
Ardito, Roxanne	Davison, Chris and Schennach, Petra	Koenig, Bruce and Carol	Quiquero, Vince	St. Andrew's Presbyterian Church
Armstrong, Jane	Delisle, Emily	Komolova, Marina	Radecki, Barbara	Alectra Utilities
Balnar, Mike	Demarco, Paul	Lickrish, David	Ravary, Gaetan	Estate of Kurt Fellinghauer
Bard, Carol	Duncan, Alison	Litchfield, Jane	Renner, Crista	Rowan Williams Davies & Irwin Inc.
Barendregt, Daniel	Dunsmore, Andrew and Evelyn	Lockhart, Lynn	Sales, Karyn	Sleeman Brewing and Malting Co. Ltd.
Barker, Ian	Durbin, Cai	Lohuis, Carol	Seth, Shaman	Charitable Gift Funds Canada Foundation
Beland, Renee	Durbin, David	Longo, Angelo and Rina	Simmons, Andree	William E. Koornstra Professional Corporation
Bennett, Sharon	Felker, Kurt	Lord, William and Catharine	Snell, Leslie	SV Law LLP
Berardine, Jeff	Ferguson, Christine	Lucchetta, Gia	Snider, Frances	BlueTriton Brands
Berruti, Nadia and Alex	Finn, Heather	MacIvor, Katie	Steele, Jayden	Compass Community Services
Billings, Keith	Fisher, Dorothy M	MacKinnon, Evan	Stevens, Robert	RLB LLP
Blok, Greg	Frehr-Smith, Deborah	Mactaggart, Will	St-Pierre, Amelie	Triumph Tool Ltd.
Bonin, Marie-Paule	Giddy, Kathrine	Martin-Brown, Renée	Stultz, Raymond	7088728 Canada Corporation
Boulton, Tim	Gillespie, Sandra	Masterson, Cathy	Takata, Janet	Triton Engineering Services
Bowes, Christine	Goddard, Catherine	Mathews, Barbara and Bruce	Taylor, Doug	The Joy M. Cunningham Fund
Boyd, Ken	Gourlay, Mike	Mayne, Jeffrey	Thatcher, Dana	Sunlife Financial
Brooks, Leslie	Granger, Kristen	McBey, Betty-Anne	Thompson, Kevin and Janice	Centennial Principals Account
Brooks, Margaret	Greenaway, Dr. Kathryn	McCraw, Patricia J.	Tilt, Nancy	Complete Tax & Business Services
Buchmar, Ethan	Greg, Pinks	McIver, Geri	Tjok-A-Tam, Cheryl	Elinesky Schuett Private Wealth Management of RBC Dominion Securities
Canada Helps A non	Guthrie, Ann	McIver, Hilary	Turvey, Robert	HHI Holdings Inc.
Carla Newbould	Harrison, Lynn	McIver, Molly	Valente, Beth Ann	Thatcher Farms Butcher Shop, Bakery and Farm Market
Catran, David	Haupt, Jason	McKessock, Linda	Van Vliet, David and Burrows, Beth	Thordar Consulting Inc
Bannon Waterman, Celeste and Waterman, Robert	Healey, Pamela	McKitrick, Kevin Thomas	Vielma, Ryan	Dr. Kyrie Little Medicine Professional Corporation
Chadwick, Scott and McIver, Geri	Holyoke, Paul	McQuade, Vanessa	Wagner, Chelsea	Ironshore Pharmacy
Chapman, Gwenneth	Hood, Lisa and Jeff	McRoberts, Scott	Wallace, Garry	Guelph Glass Ltd.
Clarmo, Kerry	Ieropoli, Carmela	McVean, Joan	White, Lynda and White, George	Guelph Emergency Medical Services Ltd.
Clayson, Ed and Wendy	Jakki and Jamie Prince	Miltenburg, Liz	Willard, Chris	Enrich It Woodworks Inc.
Colanardi-Farrell, Cristina	Johnson, Andrew and Janet	Moffat, Dave and Beryl	Wismer, Sally	Phelan Farm
Cox, Kim	Johnson, Roger	Nyaluak Duen, Rebecca	Withdraw, Taylor	
Cremasco, Dan	Johnstone, Eric	O'Brien, Carly and Trochta, Adrian	Wood, Janet M.	
Cremasco, Susan and Richard	Jones, Joanne	Pavao, Sarah	Zettle, Katherine	
	Keller, Laura		Zinger, Dennis	

# Home for Good

## Bringing hope and homes to Guelph-Wellington

The Home for Good Campaign is a bold call to action to solve homelessness in our community. Through the generosity of our community, we will raise \$5 million to build Homes for Good for people experiencing homelessness in Guelph and Wellington.

**On any given night, we know by name at least 140 people in Guelph and Wellington County who identify as homeless. Homelessness is unbearable – and solvable when we work together.**

The immediate focus of Home for Good is to raise the capital investment required to complete three projects that will contribute 72 supportive housing units in Guelph. These Permanent Supportive Housing units provide people experiencing chronic homelessness with consistent social and emotional supports which can include programs around mental health, wellness, and food security. To date, investment commitments from all levels of government and other community agencies will realize 80% of funds needed to deliver three PSH projects that will move our community toward a 50% reduction in homelessness. They are Kindle Communities, Stepping Stone, and Wyndham House.

**As of July 2023, two of the three projects have been completed and 40 local people experiencing homelessness have or will soon have a supportive place to live.**

Stepping Stone's Grace Gardens and Wyndham House's Bellevue Support Housing are complete, and Kindle Communities' Kindle Communities Apartments is well on its way to completion later this year (fall of 2023).

Together as a community, we will raise \$5 million to support this important and urgent need.

**We have already raised an amazing \$1.9 million.**

Home For Good Campaign partners, Guelph Community Foundation and United Way Guelph Wellington Dufferin, have a proven track record of turning \$500,000 into \$1M. An incredible \$596,000 was raised in early 2023 thanks to the City of Guelph's dollar matching program which was exceeded by \$95,000 from the

community through Home for Good's communications and fundraising efforts. This included donations from individuals, organizations and businesses. The campaign partners have leveraged the dollars to turn the City funds of \$500,000 into \$1,096,243.

Both organizations are longtime community leaders in fundraising and community building with proven experience working together, most recently to lead the COVID-19 Community Response Fund, an urgent call for donations and support to help address critical needs brought about by the pandemic. Together, they lead all aspects of the campaign including community outreach, fundraising, fund management, and allocation.

**Visit the Home for Good website, [homeforgoodgw.ca](https://homeforgoodgw.ca), for more information and to donate and help.**

The Home for Good Campaign aims to reduce the number of people experiencing chronic homelessness by 50% and build a fund to continue finding solutions as a community.

Clockwise from smallest photo: Donation from The Bookshelf Guelph, New Kindle Community Apartments, Campaign members and supporters



# A·R·O·U·N·D DOWNTOWN

The return of Around Downtown, the Guelph Community Foundation's major fundraising event on September 25, 2022, raised over \$23,000 in support of the Foundation's mission. The funds raised will be directed towards the Foundation's operational work of building endowments, creating legacies, donor stewardship, and granting to local charitable organizations and initiatives in our community.



Photos from top: Around Downtown's Orange Tour Group, live auction at the Onyx Nightclub

# Financial summary

## 2022

Our Investment Committee has continued its commitment to strong financial governance of our Endowed and Operating Reserve assets with investment policy and compliance improvements. In fact, donations increased by 57.5%, with donations totalling more than \$2.62 million in 2022 compared to over \$1.51 million in 2021.

Although our 2022 return surpassed many of our established benchmarks, global, political and economic factors such as high inflation and volatile financial markets contributed to a significant market downturn last year and the annualized rate of return on our endowed portfolio was -8.45%. These factors have added stress on our endowment fund to meet our mission as Foundation assets under administration at our 2022 year-end declined \$1.185 million from 2021.

With greater market stability in 2023, we continue to steward funds with a steady investment strategy guided by principles that align with our Foundation and stakeholder values, such as increasing our Impact investment holding to include a \$50,000 bond with local not-for-profit organization 10C.

The Foundation's operating expenditures of \$490,000, exclusive of investment management fees, covered administration and salaries for three full-time and one part-time staff. Administrative fees and recoveries for philanthropic service covered 64% of the cost to deliver the Foundation's services, and the balance is funded through donations, fundraising events, and operating reserve.

Utilizing strong fiscal governance principles, we steward the Foundation funds through ever changing times with confidence in our ability to provide positive community impact into the future.



Wealth Management  
Dominion Securities

Clayson Wealth Management

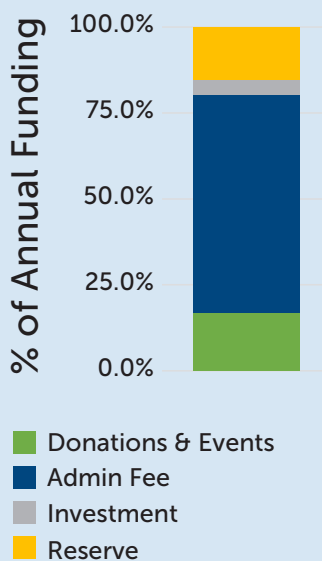
# Annual Report for the Year Ending December 31, 2022

## Statement of Operations

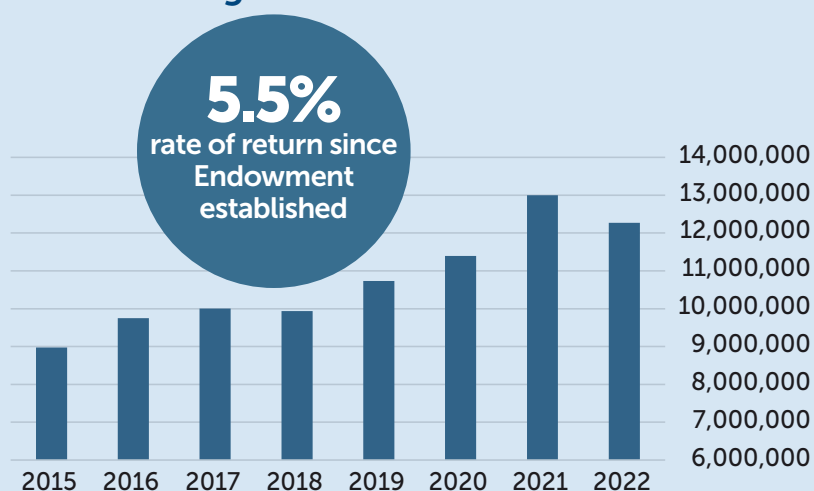
The summarized information below represents highlights of our fiscal year and was extracted from the financial statements as audited by RLB LLP.

	2022	2021	2020
Donations	\$2,626,992	\$1,510,724	\$1,571,195
Investment income	\$287,467	\$1,375,990	\$302,5871
Other	\$2,175	\$75	\$100
Fundraising	\$24,470	\$42,492	\$0
Grants	\$14,065	\$4,421	\$3,759
<b>Revenue</b>	<b>\$2,955,169</b>	<b>\$2,933,702</b>	<b>\$1,877,6415</b>
<b>Grants paid out</b>	<b>\$2,052,274</b>	<b>\$1,195,230</b>	<b>\$1,455,551</b>
<b>Net revenue before expenses</b>	<b>\$902,895</b>	<b>\$1,738,472</b>	<b>\$422,090</b>
<b>Operating expenses</b>	<b>\$541,466</b>	<b>\$390,312</b>	<b>\$354,276</b>
<b>Revenue in excess of expenditures before the following</b>	<b>\$361,429</b>	<b>\$1,348,160</b>	<b>\$67,814</b>
<b>Unrealized (depreciation) appreciation of investments</b>	<b>-\$1,398,657</b>	<b>\$695,242</b>	<b>\$447,491</b>

### Operations Funding



### Growth of Endowed Fund Assets Under Management\*



\*Endowed Asset growth is reflective of principal and market fluctuations.

# From our Board of Directors

The word 'philanthropy' has roots in the Greek words 'to love' and 'humankind'. At The Guelph Community Foundation, the philanthropic services we provide are to be accessible to all as a means for good, reconciliation, and community building. This inspired vision of our place in the community requires not only engaged staff and volunteers but strong governance and a plan to build up at a time when needs in our community are deep and there has been significant change.

In 2022 the staff and volunteers at the Foundation engaged with our fundholders and community partners to develop a new strategic plan. We also welcomed fresh perspectives from new volunteers and board members who provide guidance and oversight of the foundation as we carry out this important work. New perspectives in a time of change has helped us redefine our 'what we do' and 'why' and we are proud to share these with you.

**Purpose:** To strengthen and support our community through philanthropic leadership.

**Mission:** To empower people and causes through evidence-based granting and donor support.

As the Foundation follows a new path with strategic focus, we see the magnitude of the work tasked to the small staff team. This year we have taken another step forward in a new cooperative leadership model, welcoming Beth Ann Valente to our Senior Leadership Team and acknowledging Chris Willard's earned place as a community builder. Chris's outstanding abilities as a trusted connection between people and causes and Beth Ann's passion for processes, procedures, and metrics will ensure we earn and maintain trust by operating as philanthropic leaders.

With deep gratitude to the many volunteers, donors, and fundholders that support GCF, we are excited for the future seeing all that is possible together.

**Andrew Johnson, Chair** and  
**Carly O'Brien, Vice Chair**



**Top row:** Andrew Johnson (Chair), Carly O'Brien (Vice Chair), Hilary Coates, (Treasurer-Secretary) • **2nd row:** Justin Chan, Mike Delisle, Roger Garriock • **3rd row:** Crista Renner, Mark Muir Rodenberg, Karyn Sales • **4th row:** Riley Graybrook, Eric Johnstone, Jaime Power • **5th row:** Sara Sayeed, Ray Stultz, Chelsea Wagner • **Past members not pictured here:** Dr. Dorothy Bakker, Mike Gourlay, Dr. Maneesh Jain

# Thanks!



GCF staff and volunteers at the 2023 Summer Social

We are truly grateful for the support of over 50 volunteers.

## Volunteers

Alex Di Lello	David Durbin	Justin Chan	Riley Graybrook
Andrew Johnson	Dean Coates	Karyn Sales	Robert Graham
Angela Taglietti	Dr. Dorothy Bakker	Kevin McKittrick	Roger Garriock
Beth Burrows	Dr. Maneesh Jain	Krista Walford	Sandy Halloran
Beverley Watters	Ed Clayson	Lynn Vanshaibe	Sara Sayyed
Bill Greenaway	Eric Johnstone	Mark Rodenburg	Scott Connell
Carly O'Brien	Fiona Kennedy	Mary Tuumanen	Sue Keuhl
Catherine Goddard	Frank Valeriote	Megan Cameron	Sumita Pillay-Dason
Celeste Bannon Waterman	Hilary Coates	Mike Delisle	Sylvia Plester-Silk
Chelsea Wagner	Jaime Power	Mike Gourlay	Trisha Fontyn
Christopher Henry	Janet Kaufman	Mike Greer	Valerie Boyd
Crista Renner	Jessica Wroblewski	Ray Stultz	William Greenaway
Dan O'Donnell	Jordan Dowdall	Renata Rusiniak	

Many thanks to our partners.

## Partners

City of Guelph	Old Quebec Street Shoppes & Office Suites
Community Foundations of Canada	RBC Dominion Securities – Clayson Wealth Management
County of Wellington	RLB Chartered Professional Accountants
Foundant Technologies	Toward Common Ground
Intellicore	United Way Guelph Wellington Dufferin
Miller Thomson LLP	

A special thanks to those volunteers that left in 2022. We greatly appreciate your time and contributions made to the foundation.

Beth Rafferty-Price	Nina Vanderzweep
Cherie Bauman	Peter Barrow
Dana Nuttley	Robert Graham
Deb Armstrong	Stephanie McCrone
Janet Kaufman	Terrie Jarvis
Jaya James	Tim Boulton
Joan Eaglesham	Trevor Westerhoff
Julie Rattray	Valerie Boyd
Laura Cullen	

And a special thanks to our former staff and board members for their support.

Wendy Manso, Development and Donor Services Officer
Jennifer Ribout, Marketing and Events Intern
Vanshika Magoo, Grants Intern
Dr. Dorothy Bakker, Board Member
Mike Gourlay, Board Member
Dr. Maneesh Jain, Board Member
Karen Menard, Board Member
Cindy Robinson, Board Member

# Get involved. **Have an impact.**



## Donate

Donate to our GCF Community Fund or give to one of our many Charitable Endowments that provide funds to charities serving Guelph.



## Engage

Subscribe to our quarterly eNewsletter to keep up to date with our activities and upcoming events you can attend.



## Volunteer

Give your time and expertise and join a GCF committee or working group to support our mission with other local change-makers.



GCF Community Grant recipient Everdale's The Good Food Project volunteers

## Contact us to find out more. We'd love to hear from you!

The Guelph Community Foundation

55 Wyndham St N Suite 4A, Guelph, ON N1H 7T8

Website: [guelphcf.ca](http://guelphcf.ca) • Phone: 519.821.9216 • Email: [info@guelphcf.ca](mailto:info@guelphcf.ca)

Mail: P.O. Box 1311, Guelph, ON N1H 6N6

